

RSV

(Respiratory Syncytial Virus)



What is RSV?

A common respiratory virus you should know more about, RSV:

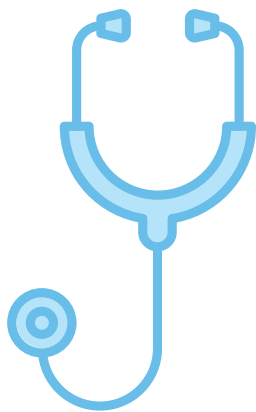
- Infects the lungs and other parts of the respiratory system
- Typically causes a cold-like illness
- Can cause severe illnesses, such as pneumonia
- Is a leading cause of hospitalization in children under 5 years of age
- Is the second leading infectious cause of infant mortality globally



Symptoms

Similar to a cold or the flu, RSV symptoms may include:

- Nasal congestion or runny nose
- Cough
- Sore throat
- Decrease in appetite
- Fever
- Wheezing (high-pitched noise when breathing)
- Rapid breathing or difficulty breathing



Treatment

There is no specific treatment for RSV.

- Mild RSV infections may go away on their own in 1 or 2 weeks
- A doctor may suggest over-the-counter medications to relieve mild symptoms
- Severe RSV infections may require hospitalization to address potentially dangerous symptoms



Clinical Research Study for Healthy Infants

The ASSERVO study is testing a potential medicine for infants to see if it may help prevent lower respiratory infections caused by respiratory syncytial virus, also known as RSV.

Your infant may be able to participate in the ASSERVO study if she/he is:

- 1 year old or younger
- In good physical health

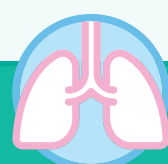
There are additional eligibility criteria that the study doctor will explain to you.

This clinical research study includes:

- 1 dose of either the study medicine or placebo*
- Participation for approximately 12 or 17 months which includes follow-up visits/phone visits

*The placebo looks like the study medicine but has no active medicine.

For more information, including the potential risks and benefits of participation, please contact:



ASSERVO